

Distributed throughout
JINDALEE
JAMBOREE HEIGHTS,
MT. OMMANEY
BRISBANE, QLD.

JINDALEADER

VOLUME 7. No. 3

THE MONTHLY NEWS FROM BRISBANE'S SUBURBS OF THE 70's

APRIL, 1972

SHOPPING CENTRE CHANGES HANDS

The East Brisbane Permanent Building Society has purchased the Shopping Centre at Loorannah Street, Jindalee, from Hooker Centenary Pty. Ltd. for a sum in excess of \$130,000.

The total area of the site, including parking space, is 2½ acres. The Centre at present contains fourteen shops.

Work has already started on additional shops and it is anticipated that the size of the shopping centre would be doubled. The plan provides for a large food store, dentist, green-grocer, barber and professional offices, one of which will be occupied by a solicitor.

The East Brisbane Permanent Building Society has its Head Office at 281 Adelaide Street in the city and branches in five suburbs.

The Managing Director, Mr. Frank Coory, said that it is proposed to open a

branch office in Jindalee Shopping Centre as soon as possible, to enable residents of the Centenary Suburbs to take advantage of the Society's safe investment plan, returning 7% net per annum at no fixed term, with quarterly interest payments on daily balances.

The East Brisbane Permanent Building Society operates like any savings bank, in that money can be withdrawn at any time.

The construction work is being carried out by Villa Regis Constructions Pty. Ltd.

SECOND CUT PRICE STORE FOR JINDALEE

Agreement has been reached for Cut Price Stores to occupy new food store premises now under construction in the Loorannah Street Shopping Centre.

This will be the second Cut Price Store in Jindalee.

The new store, which is expected to be ready for opening before the end of June, will have a floor area of approximately 3,000 sq. ft. It will be run on the same lines as the one in Curragundi Road, Jindalee.

A spokesman for the company said that the first Jindalee Cut Price Store, which was opened in August, 1970, has done very well right from the start.

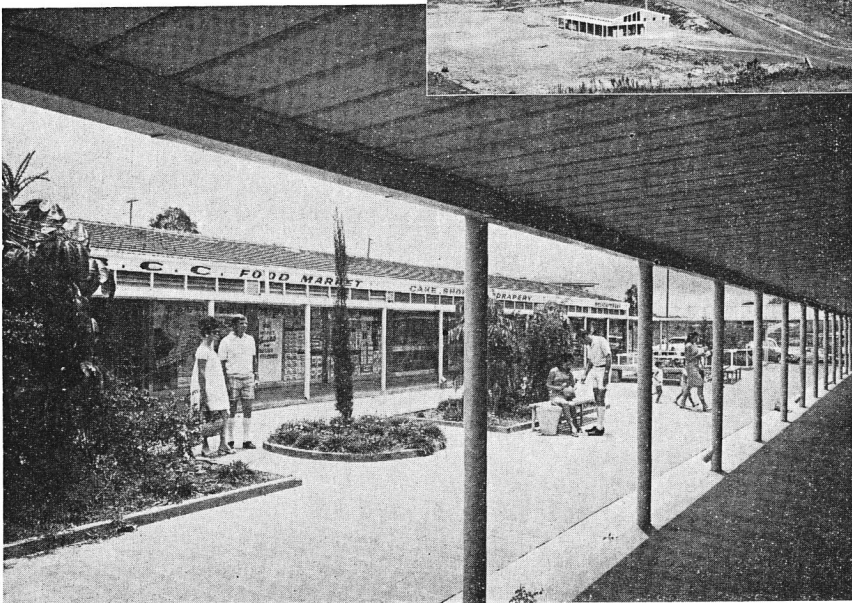
People of Jindalee have expressed a great deal of interest in the particular type of trading that is the

policy of Cut Price Stores, i.e. every item is sold at a permanently reduced price all the time.

There are ninety-nine Cut Price Stores in Queensland, Northern New South Wales and New England.

Lessees of the store will be Lorenza Supermarkets Pty. Ltd.

LOORANAH STREET SHOPPING CENTRE, JINDALEE, today. Inset, a flash-back to 1963, showing the first stage of the Shopping Centre.



Moving?

To or From Jindalee, or Upgrading

Then Ring Len Phillips

The Man on the Spot

TEL. 47 4891 A/H. 76 1892

7 Yarrimbah St., Jindalee

Interstate, Local, Overseas,
and Office Removals, Storage

Move with Your Local Removalist

With The Personal Service

Depot: 152 Musgrave Rd., Coopers Plains

RAILWAY PARADE
DARRA
70 4948

GUIDE STREET
JAMBOREE HEIGHTS

WELLAUERS BUTCHERY
76 1827 PTY. LTD. 76 1038
FREE DELIVERY

CURRAGUNDI ROAD
JINDALEE 76 1827

LOORANAH STREET
JINDALEE 76 1038



FULL RUMPS ... 64c lb.

6lb RUMP STEAK at 68c lb

3 lb RUMP STEAK at 75c lb

T - BONE STEAK 3lb at 78c lb

SIDES OF LAMB ... 22c lb.

FULL LEGS OF LAMB ... 42c lb.

PORK CHOPS, 6lb. at ... 60c lb.

LAMB GRILLING CHOPS,
3lb at 35c lb