

JINDALEADER

VOLUME 12, No. 5

MONTHLY NEWS FROM THE

Centenary
Set...

SUBURBS

JULY, 1977

JINDALEE GOLF CLUB EXTENDS

The Jindalee Golf Club this year is celebrating its tenth anniversary. Few members will remember the old house on the grounds where now the Jindalee Hotel is situated and which served as one of the first meeting places. A few more may still remember the "on-course shop" under the big tree and made up of crates, boxes and a folding chair, where golf balls, tees and soft drinks were sold and green fees were collected by dedicated members, protected against the hot summer sun and heavy rains by nothing more than a beach umbrella.

These times have passed but are worthwhile remembering now that we are embarking upon dramatic extensions to the clubhouse, which after all is only ten years young. Not a bad record of achievement for a nine-hole golf course with only limited membership.

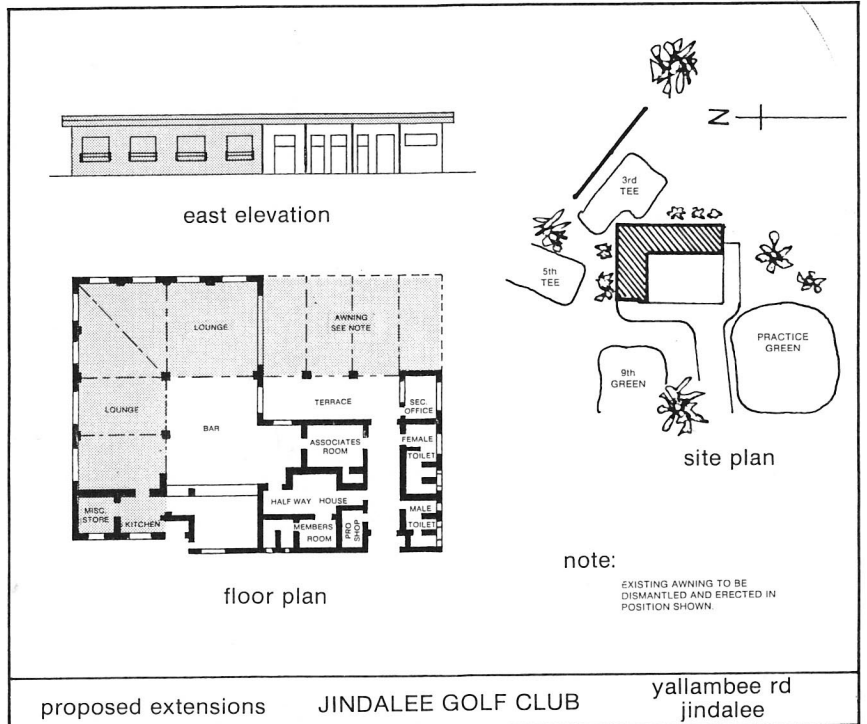
The clubhouse as it stands now was built and is designed to take a second storey, hence the solid foundations and the 7" flat reinforced concrete roof. The Committee after lengthy deliberations and guided by the all-important cost factor however have decided against going up and instead adopted the alternate way of extending the downstairs area. It has therefore left the opportunity open to go upstairs at a later date, when club extensions have to be reviewed again.

The Committee had only three major ingredients to work with to transform the dream of extending into reality: faith, determination and resourcefulness.

Faith in the future of the club, in its continuous support by its members and many friends who are all very anxious to see the original golf club in the Jindalee area progress still further.

Determination to forge ahead regardless of severe setbacks such as the disastrous 1974 floods which cost the club tens of thousands of dollars and notwithstanding the unexplainable rejection by the Minister for Justice to extend to the golf clubs the same rights as are extended to other sporting clubs in relation to take-away bottles by members, such denial severely reducing the income earning capacity of the club.

Resourcefulness in exploring and developing alternate means of creating income to make all this possible. Not an easy task! The club house was officially opened in 1967 by the Patron, the Hon. John D. Herbert, now Minister for Community and Welfare Services and Minister for Sports and the extensions now contemplated will more than triple the members lounge, adding close to 137m². This has been achieved by extending 6.7m to both the northern and the eastern aspect of the present lounge. The new lounge will of course be completely carpeted and furnished with comfortable arm chairs and tables. With the internal walls being woodgrain panelled and soft lighting being installed, thus creating a feeling of intimacy, we have no doubt in attracting many new members and even less doubt in members and friends being induced to pop in for a cosy drink in extremely pleasant surroundings.



proposed extensions

JINDALEE GOLF CLUB

yallambee rd
jindalee

To cater for the extra patronage the bar will be lengthened by 3.4m to 7.3m and of course will be redecorated.

The kitchen will be remodelled and enlarged from 7.5m to 20m² with a serving opening into the new lounge area. We anticipate that in providing this additional facility the club can cater more efficiently for the need for the hungry golfer and social member.

The existing lounge has not been forgotten. The large 4 double sliding doors will be removed and the then exposed square doorways will be arched with woodgrain panelling as will in fact the entire present lounge, creating a warmer and more inviting atmosphere.

We extend a cordial invitation to all residents to join us in a game of golf and thereafter relax at the 19th and view for yourselves what the Jindalee Golf Club is all about.

21st BIRTHDAY

Hon. John Herbert, M.L.A. came of age politically on 19th May last. He celebrated the 21st anniversary of his first election to Parliament as Member for Sherwood. He is now third in seniority in Parliament and second in seniority in Cabinet.

Mr. Herbert said that when he was first elected in 1956, the then Deputy Premier, Mr. J. Duggan, M.L.A., described him as a "political neophyte". This was possibly understandable as he was the youngest member by many years but time had proved Mr. Duggan wrong.

He was elevated to Cabinet while still in his thirties and has served over 12 years in various portfolios.

MEMORY LANE

A mounted golf club and ball on the wall of the Jindalee Clubhouse commemorates the opening of the Nine Hole Municipal Course by the then Lord Mayor, Alderman Clem Jones, on the 21st February, 1970.

At the function, the Lord Mayor was asked to symbolise the occasion by hitting a ball off the first tee. Being a cricketer from way back, he played two 'delightful' hook shots into the creek before finally topping a ball which officials were able to recover.

The original Hooker Rex sales office was situated on the present Jindalee Hotel site and also served as a clubhouse. The golf pro., Mr. Frank McCarthy, was appointed the company's first Sales Manager and it is significant that he was allowed to pocket any fees collected to supplement his real estate commission earnings which were minimal in the first year of operating (1962/63) — only 20 land sales were effected.

(Editor's Note: Contributions to Memory Lane by local residents would be very much appreciated).

SEE THE HOUSE OF THE MONTH ON PAGE 4

This brick home is situated in Blaxland Court,
Mt. Ommanney.