

Distributed throughout
JINDALEE
JAMBOREE HEIGHTS,
MT. OMMANEY,
RIVERHILLS, WESTLAKE
BRISBANE, QLD.

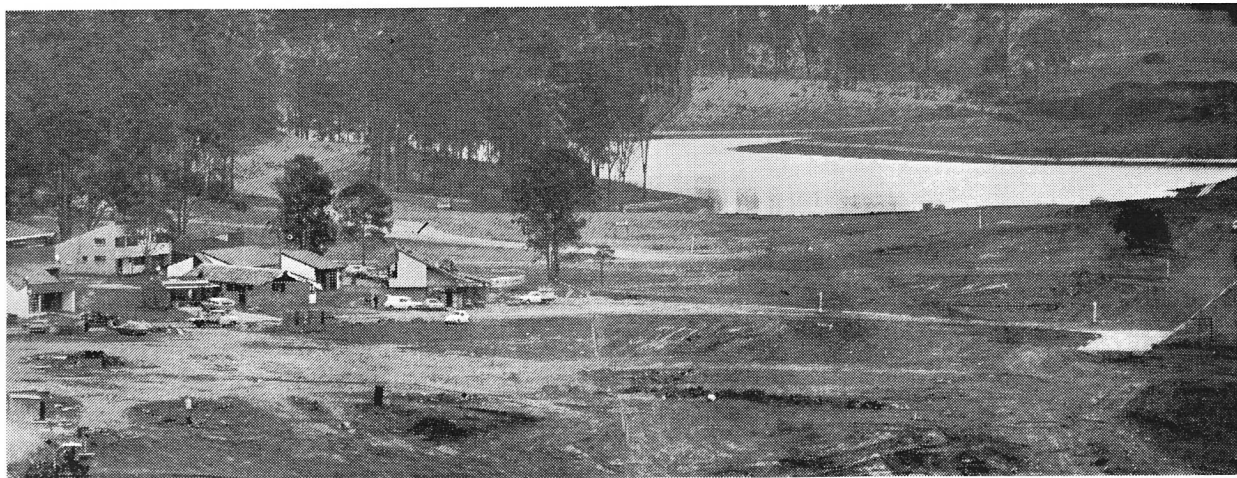
JINDALEADER

VOLUME 8 No. 5

THE MONTHLY NEWS FROM BRISBANE'S SUBURBS OF THE 70's

JUNE 1973

LAKEFRONT DEVELOPMENT



Courtesy Courier Mail

Hooker Centenary Pty. Ltd. announce the opening of yet another new suburb, called Westlake, coinciding with the opening of the company's Million Dollar Homes Parade on 9th June.

For the first time in Brisbane, lake-side home-sites have been developed at Westlake around the 22-acre freshwater lagoon which gave the new suburb its name.

The damming of a natural lagoon was approved by the State Irrigation and Water Commission, making it in effect a reservoir for storm-water from the 200-acre catchment area which drains into it.

There will be no public access to the lake. It will be an area for the sole use of the owners of the residential allotments which abut it.

In addition to the lake-side sites Westlake offers many absolute river-frontage lots, and also lots surrounding the McLeod Country Golf Club's fairways, giving residents a permanent "green-belt".

Residential lakeside development has long been part and parcel of the suburban American scene. Lakes are pleasant to look at (many people are just as content to live on a hillside looking down on a lake as to live on the waterfront itself), they create low-maintenance open space, provide many kinds of recreational facilities, and in general help create a quiet peaceful environment.

Pollution Control

The lake will be controlled and kept pollution-free by a Home Owners Association, which will adopt and abide by a set

of rules and regulations which have been very carefully drawn up to guard against any possibility of pollution.

An overflow weir holds the water at a constant level and it is continually being flushed out by rain. A stop-valve has been inserted enabling the water level to be lowered by up to 6 feet at any time. This is to enable reed growth, which could become dense around the shallow fringes of the lake, to be exposed and dried. The debris will be burned off with a flame-thrower thus ensuring that there will be no pollution. The lake could in fact be fully drained every few years so that any accumulated silt could be dredged therefrom.

Association Rules

Amongst the rules and regulations of the Home Owners Association will be the following:

Not to allow any material (including effluent) to be discharged into the lake.

Not to permit the use of any power or motor driven boats.

Not to permit any animals to bathe.

Not to permit anything to be done on the lake which may become a nuisance or annoyance or cause damage or inconven-

ience and in particular not to deposit any paper, rubbish, bottles, grass clippings or refuse into the lake.

Not to do or permit any shooting or anything involving the discharge of firearms including spear guns.

Not to capture fish other than by fishing-line or to do anything which may cause the lake to be less suitable for fish.

Not to capture any wildlife (other than fish).

Not to destroy any flora or fauna in or about the lake.

In addition to these anti-pollution and conservation measures, surrounding owners will be required not to construct buildings or other erections on the lake, not to damage in any way the concrete revetment-wall surrounding the water and to keep their properties in a neat and tidy condition, and particularly to screen clothes-lines from the water.

Water-purity Controls

Methods of control to ensure that the lake will at all times be fresh and pure include:

1. Regular treatment of algae. This is achieved by destroying any shore concentrations as they occur through wind action by

spraying with a solution of copper sulphate (this causes no harm to fish).

2. Regular treatment of water-hyacinth as it appears through the use of hormone spray which again does not endanger fish life.

3. The introduction of rubbish-racks in various catchment points around the lake. Arrangements have been made for these to be removed, emptied and replaced at regular intervals.

The total cost of the above controls is estimated not to be in excess of \$5,000 a year or approximately \$60 per residential family.

Revetment-wall

The surrounds to the lake have been identified by the creation of a concrete revetment-wall and a flat surface which has been impregnated with a cement mix in order to stabilise the soil and reduce reed growth.

The lake has been already stocked with small mosquito-eating fish ("blue eyes" and "rainbows") and will shortly be further stocked with several hundred golden perch ("yellow bellies") which are good edible fish.

Jindalee Lions Club

"Changeover Night" will be held this year at the Park Royal Motel, Alice Street, on 29th June.

The incoming President, Lion Bob Meredith, and the other new office-bearers, will be installed by Lion Bill Henley, of Mt. Gravatt Lions Club.

University Researcher Conducts Jindalee Survey

NOTICE: During this month Susan Macey, a student at the University of Queensland, will be conducting a questionnaire, authorized by the Department of Geography, in the Jindalee area. The questionnaire, on satisfaction and quality in the urban environment, will be given to a predetermined sample of households in this area and a high response rate will be necessary to give meaningful results.

Co-operation of the householder would therefore be greatly appreciated by Miss Macey as this work

forms a major part of her research.

All information will be treated confidentially and results will only be published for the area as a whole.

OFFICIAL OPENING

Jindalee Allsports, the new sports complex cum child minding centre in Sinnamoon Road, Jindalee will be opened officially on Friday, 22nd June at 7.30 p.m. by the Hon. John Herbert, M.L.A., Minister for Tourism, Sport and Welfare Services.

During the evening Australian sports celebrities will be playing tennis and squash on the new courts.

OUT PRICE STORES

BRISBANE'S CHEAPEST GROCERS

are at **JINDALEE**
CURRAGUNDI ROAD SHOPPING CENTRE
and at
EXTENDED LOORANAH ST. CENTRE
(next to Olympic Pool)