

Distributed throughout
JINDALEE
JAMBOREE HEIGHTS,
MT. OMMANEY,
RIVERHILLS, WESTLAKE
BRISBANE, QLD. 4074

JINDALEADER

VOLUME 10 No. 5

THE MONTHLY NEWS FROM BRISBANE'S SUBURBS OF THE 70's

JUNE, 1975

RETIREMENT VILLAGE

Many of our readers will have noticed the excavation activities on the corner of 17 Mile Rocks Road and the exit road to the Centenary Highway: this is part of the 20 acre site of the Central Methodist Mission's \$6 million Retirement Village.

On completion of excavation, Kratzman Holdings Pty. Ltd. will begin construction of Stage One — six buildings of motel-type units — expected to be completed within two years.

Stage One, at a total cost of \$4,201,000, has been subsidised by the Australian (\$3,892,000) and State (\$45,000) Governments.

Each unit has its own bathroom facilities, private balcony, and emergency call buttons connected to a control panel manned 24 hours a day: units are so constructed that two can be combined for married couples — one becoming the bedroom and the other a sitting room. Power points will be installed for hot-water jugs so cups of tea can be enjoyed around the clock, but main meals will be served from a central kitchen in the six dining rooms, one to each building. Mr. Ian Fulton, Architect, explained: "The paramount objective of this project, which will house 300 residents, has been to de-institutionalize the huge complex. With this in mind, we have planned numerous small, cozy areas for relaxation, broken up long passage-ways, and provided a small kitchen in each building for residents should they, for example, wish to bake a batch of scones for the visiting family."

The Village, which is non-denominational, will also have larger community lounges, a multi-purpose room for gatherings and craft activities, and laundry facilities. There will be two lifts in the two-storey complex, which, together with ramps and low-rise stairs, will make for easy access from one level to another.

An outstanding feature of the Village will be the Village Square, with a central office adjacent, providing a coffee shop, mini-supermarket, doctors' rooms, hairdressers and facilities for chiropody.

Stage Two plans are for the provision of independent cottages; forty of these will be built progressively as the need arises.

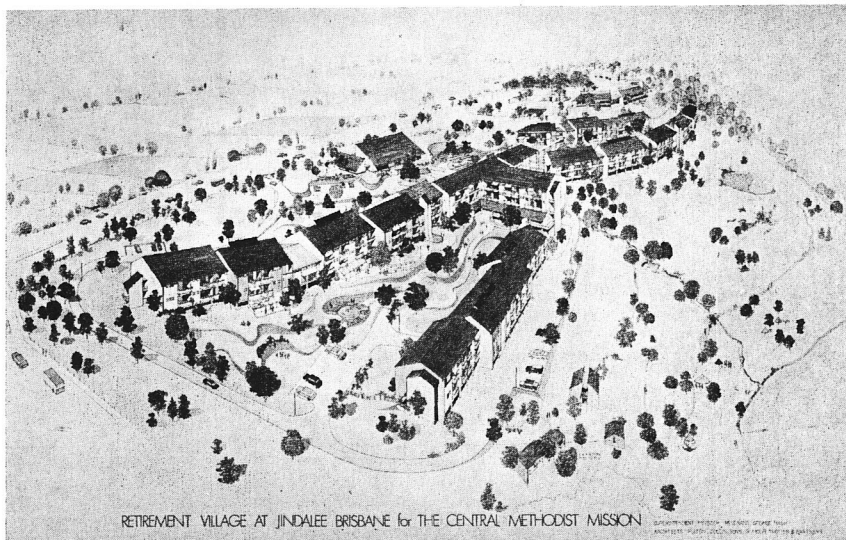
Stage Three: it is hoped approval will be gained for the building of a 60-bed hospital so that a program of total care envisaged within the complex obviates the need to move residents to a strange environment. Construction of the hospital is planned within 12 months of the completion of Stage 1, and will include a Rehabilitation Centre.

Stage Four includes the addition of a hall and library when funds permit, together with further development of the Square to provide a fountain and further landscaping.

A small area of rain-forest behind the double row of huge old Mango trees — already much admired by local residents — will provide a beautiful setting for peaceful, relaxing strolls along the planned graded paths for Village residents and visitors alike. A creek also meanders through the site, and barbeque facilities are planned along its banks where residents together with visiting families and friends can enjoy an outdoor meal.

Accommodation costs have not yet been finalised; further information and application forms can be obtained direct from the Central Methodist Mission, G.P.O. Box 427, Brisbane.

Mr. Graham Hadden, Administrative Secretary of the Mission, said: "We are tremendously pleased with the site of the Retirement Village (which is unique in this concept in Queensland) at Jindalee, as there are so many additional facilities available to the Village residents within such a short distance — golf, bowls, swimming — just to name a few".



RETIREMENT VILLAGE AT JINDALEE BRISBANE for THE CENTRAL METHODIST MISSION
Architect Mr. Ian Fulton's illustration of the completed Central Methodist Mission's Retirement Village

On The Industrial Scene . .

The newly-formed Denning McKinnon Company Pty. Ltd., incorporating Wechner Engineering, commenced operations from their premises at Jijaws Street, Summer Industrial Park, in March this year. Denning McKinnon is the only company in Australia manufacturing air-suspended chassis for coaches and buses — under the trade name 'Dennmak'. At present they employ 17 at their new plant, which also manufactures complete coaches and buses, and envisage expansion over the next two years to increase the number employed to 100, with an expected turnover of \$2 million.

Mr. Edward Wechner, Director, said: "We spent a long time looking for suitable premises, and are extremely pleased with our present position — the drive into the city is relatively quick and short, so we consider ourselves in a central position, but without the usual over-crowding and rush. The nearby Jindalee Hotel is ideal for business lunches and entertaining clients".

Mr. Wechner, who arrived from Austria 4½ years ago, lives in Jindalee with his wife and two sons and is as contented with his home suburb as with his company's business environment.

GRAVEL DREDGING

The Hon. John Herbert recently announced the hours for gravel dredging in the Brisbane River between the Victoria Bridge and the Moggill Ferry had been reduced. The new hours are from 6 a.m. to 9 p.m. — formerly the dredges could work until 11 p.m.

Mr. Herbert said that he had hoped for a 6 p.m. shut-down on dredging operations in the interests of residents of the suburbs along the river. The gravel barge operators claim that any further reduction in hours would mean a substantial rise in building costs, as the Brisbane River is the major source of gravel for building purposes in Brisbane. Operators have indicated that over the next 18 months, they would be able to install equipment which would reduce the noise of their operations considerably.

Mr. Herbert said that he would be keeping a close watch on the position and take further action if necessary.

Y.M.C.A. Club Success

Over 500 children from the Centenary district enthusiastically participated in physical recreation activities organised by the Y.M.C.A. Club over the May school vacation. The program included a tremendous variety of activities — canoeing, joy flights over Brisbane, archery, golf coaching, bush walking, ice and roller skating, little athletics, horse riding, gymnastics, ten-pin bowling and fishing.

The holiday program gave the children an exciting taste of some of the activities to come — the Jindalee Y.M.C.A. permanent activities start in June — after school and on the week-ends. Although the May program was available to all, the Club program during the next school term will be for members only. Application forms for membership of the Club were included in last month's 'Jindaleader' and are also available from Central Y.M.C.A.

As the holiday program was such a great success, the 'Y' intends expanding activities during the August and Christmas school vacations by offering an even wider range the children may choose from.

Y.M.C.A.'s Physical Education Director, Ian McKenzie, said: "I have ideas such as bus excursions to Mt. Tamborine and the Gold Coast which will be discussed at the Committee meeting together with other programs which could be implemented during future vacations. The May program could not have been organised in such a short time without the assistance given by school principals and staff from the Centenary district schools, other voluntary helpers and the many part-time staff who willingly gave their time on such short notice".

"I am still excited by the enthusiasm shown by the Centenary community for the projected Club activities, and feel that this enthusiasm combined with the help of the Club Committee, the expertise of the 'Y' and the services already provided by sporting and recreational clubs in the area, will provide the Centenary Project residents with one of Australia's best ever community recreation programs."

JINDALEE YOUNG WIVES

The Jindalee Young Wives will meet in the Methodist Church Hall, Burrendah Road, at 7.30 p.m. on Wednesday, 4th June.

Our guest speaker will be Dr. Malcolm Nasser, a pediatrician. Everyone is welcome. Please come along and bring a friend.