

# JINDALEADER

VOLUME 12, No. 1

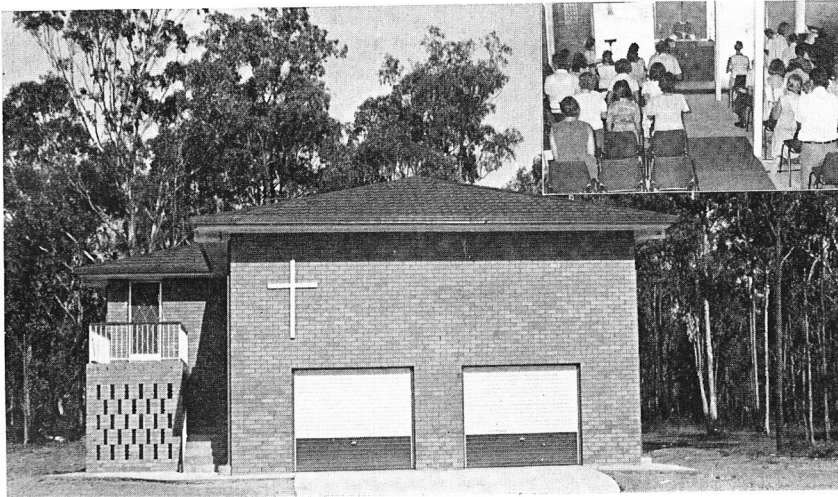
MONTHLY NEWS FROM THE

**Centenary**  
set...

SUBURBS

MARCH, 1977

## NEW ANGLICAN CENTRE



St. Catherine's new Anglican Centre. Inset: Congregation at worship

**On 2nd March, 1977 at 7.45 p.m. the Rev. Robert Nolan will be inducted at St. Catherine's Anglican Church, Middle Park. The service will be taken by Bishop Ralph Wicks.**

The Rev. Nolan, his wife, Jan and two children Mark 3½ and Elizabeth 18 months moved into the new rectory during February. Childers has been their home for the past three years and this was his first parish. Prior to his Childers' appointment, he was the Assistant Curate at St. Paul's Church, Ipswich where his ministry began. The Rev. Nolan and Mrs. Nolan are looking forward to meeting members of the community.

A new concept has been established with the building of St. Catherine's where the rector's residence is on the top floor and the chapel and meeting hall are underneath. Miss Lillian Iles of Clontarf donated the 0.4 hectare site. The \$38,000 required to build the "house worship centre" was a joint fund raising effort with

\$16,000 being raised by the Centenary parishioners, a \$12,000 grant from the Diocesan Development and an overdraft of \$10,000 from the Commonwealth Bank.

Unfortunately this new concept has not met with the approval of all parishioners. Bishop Wicks, chairman of the building fund has stated: "Because of inflation, the cost of building and land, we simply cannot afford to build churches in new areas, and a church needs a manse and a meeting hall. Instead of building three buildings, we can build one multi-purpose unit. If we wait for sufficient money to build churches, we miss out on giving ministry to the people, and people are more important than buildings."

After Rev. Nolan has taken up residence the number of services may be increased. For the time being Holy Communion will be celebrated at 7 a.m. Sunday School will still meet at the Jindalee State School but this will be reviewed later on.

The Anglican Church wishes to express their gratitude to the Jindalee Co-Operative Church for the use of their building during the past years and hopes this link will now continue and reciprocal arrangements can be made for the use of the Anglican hall.

### Kindergarten and Pre School To Open

The Kindergarten and Pre School being established by the Centenary Christian Community Centre, Estate Road, Middle Park, will open at the beginning of the second school term, on Monday, 16th May. The Kindergarten, for 3 to 4 year olds, will be conducted every morning Monday to Friday from 9.00 a.m. to 11.30 a.m. Enrolments for this group are now at full capacity for 1977. Applications for subsequent years are being received.

The afternoon programme will be for pre schoolers, those going on to primary school in the following year. It will be conducted from 12.30 p.m. to 3.00 p.m. Monday to Friday. Some vacancies exist for this group. The waiting lists at State Pre Schools in the area total 127 after enrolments for 1977 have been filled. It is therefore anticipated that vacancies in the new Pre School should be quickly filled.

The fees have not yet been finally determined because the extent of subsidy received is not yet known. However, it is estimated that a fee in the vicinity of \$1.20 per session should be adequate.

Research is now being conducted towards the establishment of an Out-of-School Care programme for primary school children. If possible this programme will begin in second term. It will operate from 3.00 p.m. to at least 5.30 p.m. Monday to Friday during school term. It can be extended to include a holiday programme. Initially a group of 30 children will be enrolled. The committee would be pleased to make contact with a man who is willing and able to be the chief supervisor, on a paid basis.

A comprehensive sample survey to establish the need for Children's Services in the Centenary Suburbs and Darra was conducted at the end of November, 1976. 600 families, representing 20% of the area, were interviewed. The results showed 140 families where there is no parent at home when the child comes home from primary school. Of these, 115 indicated an interest in an Out-of-School Care programme. In addition the survey shows 545 families where at least one parent is at home when the child comes out of school and who are interested in the programme.

The Children's Services Committee of the Centenary Christian Community Centre has made the difficult decision not to proceed with the long day Child Care programme originally envisaged. Money factors combined to produce this decision. However, as an alternative it is proposed to establish a Family Day Care Service as early as practicable. The survey revealed 155 mothers in the area who are interested in applying to be approved caring mothers. If only 50 of these actually joined the service it would become a viable concern.

Enquiries and enrolments may be made at the church office, 45 Estate Road, Middle Park or 'phone Pastor Boughen on 376 4731.

### Oxley State High School

Congratulations to Linda Breslin of Jindalee who has been elected Girls' Captain of the Oxley State High School. Linda was presented with her badge at morning assembly by Hon. John Herbert, M.L.A.

Our best wishes to Linda for a very happy and successful school year.

### Sumner Park Industrial Estate Canteen

Hot take-away meals are now available from the new canteen just opened at the corner of Jijaw and Bronze Streets, Sumner Industrial Park. Lasagna, fried rice and curried prawns are just some of the take-away meals offered. Only one of these is available daily. Other take-away foods are also sold as well as the usual tea, coffee and cold drinks. Prices are very reasonable. A "Red" 'phone has been installed for the convenience of the public.

The canteen is open from 8 a.m. to 4 p.m. Monday to Friday and orders may be 'phoned through on 376 4626.

The canteen is adjacent to a new warehouse. At present the 10,000 sq. ft. warehouse and luxury, air-conditioned offices are empty. If anyone is interested they could 'phone Mr. Hans Strik on 376 1786.

### Parking Regulations - Jindalee State Primary School

Constable Chamberlain wishes to draw the attention of motorists to the parking signs at the Jindalee State Primary School. Drivers have been ignoring the "2 Minute Pick Up and Drop Off" signs and also the "Bus Stop" parking area. Non observance of these signs causes great inconvenience to everyone and creates a traffic hazard for school children who are walking home or wishing to board the school bus.

Motorists will be booked for infringement of these parking regulations.

Renewal of driver's licenses, provisional driver's licences or permits are not available from Constable Chamberlain at Jamboree Heights. All these are issued at Oxley Police Station.