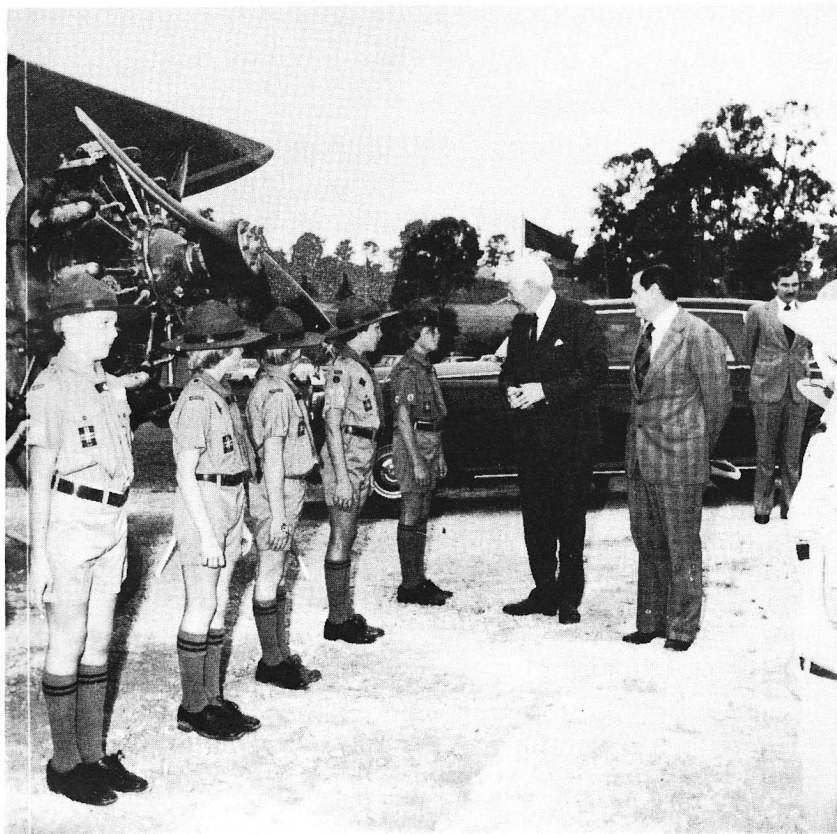


JINDALEADER

VOLUME 13, No.10

MONTHLY NEWS FROM THE HOOKER CENTENARY GARDEN SUBURBS

NOVEMBER, 1978



On his arrival we see the Governor of Queensland chatting amicably with one of the Scout Guard of Honour. Looking on is Mr Alan Vogan, General Manager of Hooker Centenary.

WESTLAKE DISPLAY VILLAGE OPENING

On his first official visit to the Centenary Estates, His Excellency, Sir James Ramsay, K.C.M.G., C.B.E., D.S.C., Governor of Queensland and Patron of The Royal Flying Doctor Service opened The Westlake Display Village on 10th November.

In his speech of welcome to Sir James and Lady Ramsay, Mr. Vogan, General Manager of Hooker Centenary, paid tribute to the builders, material suppliers and other sponsors for their support, and to the Centenary community which has thrown its weight behind the project.

He also acknowledged, with particular thanks the assistance given by his own staff, Ansett Airlines of Australia, the Queensland Air Museum, the Manager and Staff of Western Suburbs Body Works, The Chewing Gum Airfield, Currumbin and the Jindalee Lions Club. (The latter will be providing refreshments and selling the House Plan Book).

The project is an unusual venture in that it is not only designed to demonstrate the ability of the Queensland builder to hold his own in both the design and construction of attractive homes, but as well, assist The Royal Flying Doctor Service Jubilee Appeal. The appeal will benefit from the proceeds of the sale of the "43 Selected Home Plans" book.

This book includes a history of The Royal Flying Doctor Service which should prove of interest to everyone, especially school children; a brief resume of the Hooker Centenary Project — of its past successes and future aims and the plans of the eight display homes plus selected perspectives

ADDRESS BY SIR JAMES RAMSAY

Thank you Mr. Vogan for your kind words of welcome to me and my wife, thank you too for your invitation to take the grand tour of the Centenary Project — what an undertaking it is.

My wife and I had driven casually through it one free afternoon not long after we arrived in Queensland, but I am glad now to have seen and to have heard from you its full extent and to get a glimpse of the bold vision behind it, for there is no doubt it is the biggest real estate development ever undertaken in Australia, and I am pleased to learn how it has progressed so relatively smoothly with the many Authorities and Governments involved.

Westlake is a vital and an integral part of the whole and we are here today at a function that goes beyond merely promoting the sale of subdivided and serviced blocks.

We are here today to see a shop window of the expertise of the Queensland Builder and to see the kinds of materials manufactured and supplied in Queensland to the builder and to the home buyers.

And it is also a charity day, for the Lions are raising funds for the Royal Flying Doctor Service in Queensland in their Golden Jubilee Year.

I am the Patron of the R.F.D.S. and I have taken a number of opportunities to visit their bases and to fly on clinic runs with them and I can tell you that they perform a wonderful job. Their operation saves us millions of dollars as taxpayers and the fund raising is conducted entirely by volunteers. Their expenses to donations ratio must be the smallest in the country. It is a tremendous operation and we should be grateful to Hooker Centenary for this opportunity to gain further support.

We are looking forward now to having a close look at the new houses displayed for us and so I have great pleasure in declaring the Westlake Display Village to be officially open.

INITIATIVE & RESPONSIBILITY

Mr. Evan White, General Manager
of Besser (Qld.) Limited

Against the background of the Australian economy and the situation in the building industry in particular, on behalf of the builders and suppliers I would like to express to Hooker Centenary our very deep appreciation for the initiative they have displayed which, as you will see, provides vital and tangible evidence that private industry in Australia, and in particular in Queensland, does have a part to play and, in spite of the economic scene, at least some sections of private industry are prepared to accept their responsibility.

This Display Village goes some considerable distance towards showing all of us in the community all is not gloom. We are still a young country, we have still many opportunities, splendid opportunities before us, and, in a small way, this Village shows that if a group of people are prepared to get their hand and their shoulder to the wheel, things can still be accomplished.

It is probably less than a hundred years ago, perhaps a little more, since the pioneers came to this area, felled the trees and started raising cattle and living off the land. I can't help but feel that in some way we have lost that pioneer spirit but there are still opportunities for us to regain some of it.

and floor plans for thirty-five more homes.

The builders involved in The Westlake Display Village are Derek Boswell, Boswell Builders (Lockerby Pty. Ltd.); Mike Williams, Dave Cranfield (C.I. Homes); Dick Gillatt (Gillatt Constructions); Vince Kaluza (Beautiful Homes Pty. Ltd.); Philip Locke and George Simmonds—Opus 2 (Constructions) Pty. Ltd.; Brian Smith (B.E. & T.E. Smith); Eric Tebbett (E. & M. Tebbett); Mike Veverka (Confitt Service and Construction).

The Display will be open for three months and inspection hours are 2p.m. to 8.00p.m. — Wednesday and Saturday.
10a.m. to 8.00p.m. Sunday.

An adventure playground has been specially constructed and incorporated within the complex for visitors' children.

The opinion expressed in political advertisements in this publication are not necessarily those of the publishers.