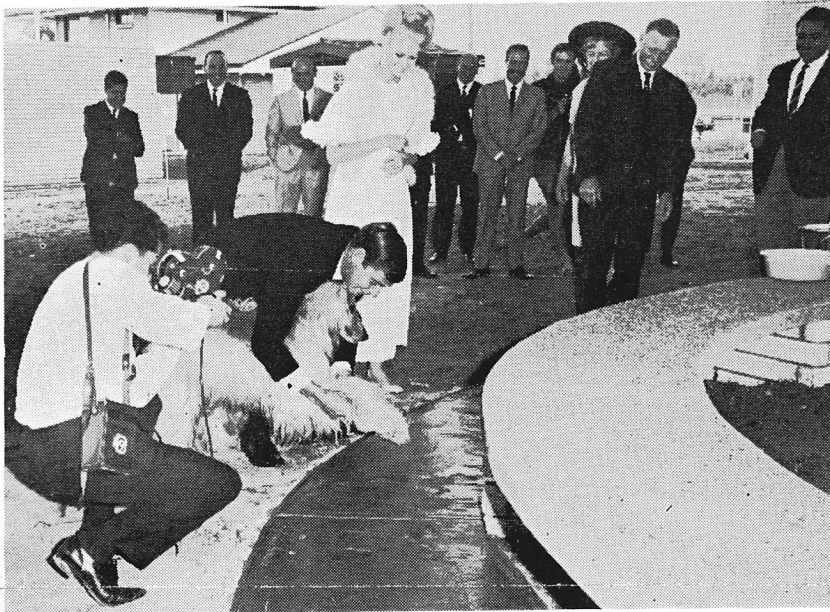


FIG TREE AND FOOTPRINT



The Lord Mayor looks on as "Nooky" leaves her prints around the Group 7 fig tree at Jindalee Chase.

The cement path surrounding the tree bears witness to another colourful part of the ceremony. In true Chinese-Theatre style — though in sunlight rather than spotlight — the Lord Mayor of Brisbane and the Lady Mayoress left their footprints and fingerprints in the specially-prepared cement . . . and their signatures too. Beside them are the prints of "Mr. and Mrs. Jindalee Chase" — and smaller prints signed

"Nooky". These belong to the very clever, very affable Afghan hound who is part of the success story of Jindalee Chase. If you're curious as to whether this talented lady signed her own name — we're just not saying! At the Group 7 opening, the Lord Mayor, Alderman Clem Jones and Mrs. Jones were honoured guests. Hon. John Herbert, M.L.A., thanked the Lord Mayor for performing the official

opening. The Group 7 builders were present. In his welcoming speech, Mr. Lightfoot outlined the thinking behind Group 7: "It is realised that the shopping public require to compare goods and prices readily displayed for their convenience before making a decision . . . and that when they do this, all suppliers benefit . . . Instead of having to gather information about modern building trends and mater-

ials in the "highways and hedges", home purchasers may here — on the same one-stop-and-shop principle — study these trends in the congenial and relaxing atmosphere which I believe this village provides, and ask the builder of their choice to repeat the home selected on a site which they either already own or intend to buy."

The deeds of the park surrounding the Lord Mayor's

AT GROW

What a good thing to wrap the gift presented at the opening of the Group 7 village at Jindalee Chase. At during the opening ceremony 7th, Mr. W. V. Manager of Centenary presented the Lord Mayor the giant Moreton Bay fig, which the seven houses of grouped. And Alderman Jones, lighted.

fig tree were handed to Alderman Jones, who received them on behalf of the City Council; and the party made a specially conducted tour of the seven superb display houses. Refreshments followed, and the first day in the life of Group 7, finished on a friendly note.

Group 7 is now open to the public — 7 days a week, from 10 a.m. to sundown. Representatives are

on duty at the Centre to provide information to prospective buyers. The new building trends, materials, and the beautifully furnished interiors, added interest. To Group 7, drive along the Ipswich Road, the Centenary Highway, Jindalee Chase. Look for the giant fig tree.



Chief Commissioner Coar hands back the lease for the Eighth Australian Jamboree site to Sir Arthur Fadden. Seated is Miss Kathleen Atherton, President of the McLeod Country Golf Club.

Scouts hand back Jamboree site

In an official ceremony on the 21st September, the Chief Commissioner for the Queensland Scouting Movement, Mr. Noel Coar, handed back the 1967 Australian Jamboree site to Centenary Estates Limited. The extensive 450 acre area had been gratuitously leased to the Scouts for a two-year period, so that the Eighth Australian Boy Scout Jamboree could be held there during the 1967-68 Christmas holidays.

Jindalee was chosen because of its beautiful natural setting close to the city with all facilities readily available. According to Mr. Coar, the site was the finest yet chosen for any of the eight national Jamborees, and this

Scouts had left the area. Sir Arthur commented that the clearing and tidying operations will be beneficial in surveying work to be done in the area.

As a tribute to the generosity of Centenary Estates, the Queensland Scouting Movement plans to donate a plaque for erection in the proposed Shopping Centre in the area, which Centenary Estates have applied to name appropriately, Jamboree Heights.

At the same time in another ceremony — this time a handing over — Mr. Lightfoot presented the deeds for 125 acres of this freehold land to the new McLeod Country Golf Club. President Miss Kathleen Atherton accepted the land on behalf of the Club which is the first in Australia to be administered by women.

The proposed 18 hole course is only 1½ miles from Jindalee Chase.

Spring Fete to open Jindalee State School

Programme for Saturday, 19th October:

1 p.m. — Hon. J. D. Herbert, M.L.A., arrives at Jindalee State School.

2 p.m. — Official opening of school by Mr. Herbert.

2 p.m. on — Spring Fete in school grounds.

See story page 2.